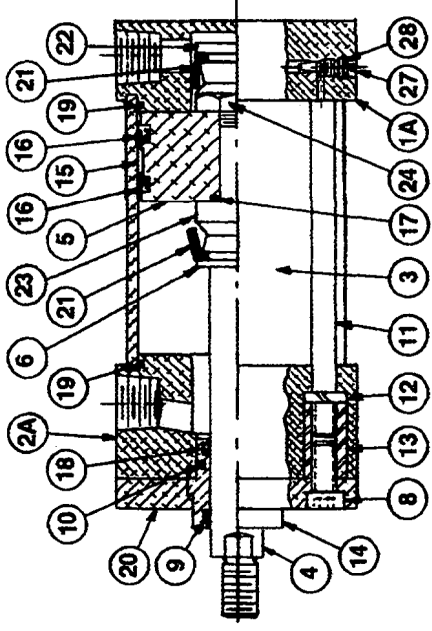


SERIES I NON-CUSHION



SERIES I DOUBLE CUSHION

PARTS LIST

P/N	DESCRIPTION	QTY.
1	REAR CAP	1
1A	REAR CAP CUSHIONED (WITH P/N 27 & 28)	1
2	FRONT HEAD	1
2A	FRONT HEAD CUSHIONED (WITH P/N 27 & 28)	1
3	CYLINDER TUBE	1
4	PISTON ROD	1
5	PISTON	1
6	SUPPORT WASHER	1*
7	PISTON NUT	1
8	RETAINING PLATE BOLT	4
9	ROD WIPER	1
10	ROD BUSHING "O" RING	1
11	TIE ROD	4
12	TIE ROD LOCKWASHER	4
13	TIE ROD NUT	4
14	ROD BUSHING	1
15	PISTON BEARING STRIP	1
16	PISTON SEAL	2
17	PISTON ROD "O" RING	1
18	ROD SEAL (STANDARD)	1
18PP	ROD SEAL (HYDRAULIC)	1
19	TUBE SEAL "O" RING	2
20	RETAINING PLATE	1
21	CUSHION CUP	1†
22	REAR CUSHION RETAINING BOLT	1
23	FRONT CUSHION SPACER	1
24	REAR CUSHION SPACER NUT	1
27	CUSHION SCREW	1†
28	CUSHION SCREW "O" RING	1†

† Per cushion

* Not used on 1 1/2"- 5" bore with oversize rod.

REPAIR KITS

Repair kits containing all wearable replacement parts are available.

Please specify cylinder bore, rod diameter, single or double ended, type of cushion, air or hydraulic operated and any options which affect repair kit.

The 1 1/2" bore magno piston cylinder requires a special piston bearing strip. Please specify MAGNO when ordering this bore repair kit.

STANDARD REPAIR KIT CONTAINS:
P/N 9,10, 14, 15, 16, 17, 18 & 19.

CUSHION REPAIR KIT CONTAINS:
Standard repair kit plus P/N 21 & 28.

NOTE: Cylinder design and cushion design for 1 6" & 8" bore are similar to Series J.

When ordering parts please specify cylinder bore, rod diameter, type of cushion and any options.